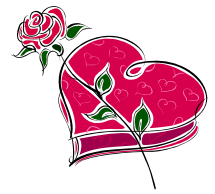


# FEBRUARY 2010 TRAINING CALENDAR



## Community



### **2/6 Pre-Service Module #5: Planting the Seed**

Child Care Links Suite 129  
1:30 pm to 5:30 pm  
Fee \$35  
410-288-5942

### **2/13 DCR 385-Use of Positive Communication in Difficult Times**

10:00 am to 12:00 pm  
Fee \$25  
Anne Arundel  
Community College  
410-777-2915

### **2/27 9 Hour Communicate as A Professional Early Educator**

Child Care Links Suite 129  
9:00 am to 6:00 pm  
Fee \$50  
Child Care Links  
410-288-5942



## First Aid and CPR



### **Renewal CPR or First Aid**

National Safety Council  
Fee \$25  
Call for class  
dates and times  
Laura Sudano  
410-296-4880 ext 108

### **2/13 First Aid & CPR Infant, Child and Adult**

Child Care Links Suite 129  
First Aid @ 8:30 am to 12:30 pm  
CPR @ 1:00 pm to 5:00 pm  
Fees: \$60 for both  
\$39 for First Aid / \$35 For CPR  
Child Care Links  
410-288-5942

### Call the following for other possible First Aid / CPR classes:

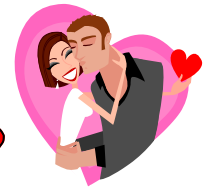
\*American Red Cross  
410-624-2060

\*Paramedical Personnel  
410-838-8821

\*Frank Peusch  
443-250-8986

\*Child Care Links  
410-288-5942

\*Daisy Sudano  
410-296-4880 ext. 108



## Child Development



### **2/9 Positive Behavior Supports**

Child Care Links Suite 129  
6:30 pm to 9:30 pm  
Fee \$25  
410-288-5942

### **2/10 Promoting Positive Behavior**

Teresa's Daycare  
6:30 pm to 9:30 pm  
Fee \$20  
Teresa Phillips  
410-686-2997

### **2/23 Child Development: School Age**

6:30 pm to 9:45 pm  
Fee \$26  
Anne Arundel  
Community College  
410-777-2915



## Special Needs



### **2/3 Attention Deficit Hyperactivity Disorder**

Teresa's Daycare  
6:30 pm to 9:30 pm  
Fee \$20  
Teresa Phillips  
410-686-2997

### **2/8 Discussion: Disabilities**

Teresa's Daycare  
6:30 pm to 9:30 pm  
Fee \$20  
Teresa Phillips  
410-686-2997

### **2/23 Autism: Walk in Their Shoes**

Child Care Links Suite 129  
6:30 pm to 9:45 pm  
Fee \$29  
410-288-5942

### **2/20 AD/HD Myth and Reality**

Baltimore City Child Care  
Resource Center  
9:30 am to 12:30 pm  
Fee \$20  
410-685-5150

### **2/25 NYC 347 Anxious Times**

6:30 pm to 9:45 pm  
Fee \$8  
Anne Arundel  
Community College  
410-777-2915

## Curriculum



### **2/1 Fingerplays, Songs and Chants**

Teresa's Daycare  
6:30 pm to 9:30 pm  
Fee \$20  
Teresa Phillips  
410-686-2997

### **2/4 DCR 381 - Reality games for School Ageds - Learning and Fun**

Glen Burnie Town Center  
6:30 pm to 9:45 pm  
Fee \$28  
Anne Arundel  
Community College  
410-777-2915

### **2/12 Creative Drama**

Child Care Links Suite 129  
9:30 am to 11:30 am  
Fee \$20  
Child Care Links  
410-288-5942

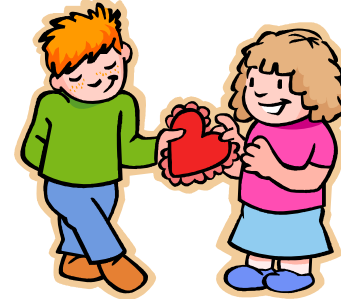
### **2/25 Literacy ABC's**

Child Care Links Suite 129  
6:00 pm to 9:00 pm  
Fee \$25  
Child Care Links  
410-288-5942

### **2/27 Working with Mixed Age Groups**

Baltimore City Child Care  
Resource Center  
9:30 am to 12:30 pm  
Fee \$20  
410-685-5150

## Health, Safety and Nutrition



### **ON LINE 2 hours!**

#### **Child Sex Abuse: Dispelling Myths, Reducing Risk**

Fee \$8  
Child Safe Program at  
St. Vincent's Center  
410-252-4000 x. 1602  
[www.childsafeeducation.org](http://www.childsafeeducation.org)

### **2/20 Emergency Preparedness**

Child Care Links Suite 129  
9:00 am to 3:00 pm  
Fee \$15  
410-288-5942

### **2/6 Medication Administration Training**

Child Care Links Suite 129  
9:00 am to 3:00 pm  
Fee \$50  
410-288-5942

## Professionalism

### **2/18 Working with Parents**

Child Care Links Suite 129  
6:00 pm to 9:00 pm  
Fee \$25  
Child Care Links  
410-288-5942

### **2/18 Director's Administrative Training: Business Practices**

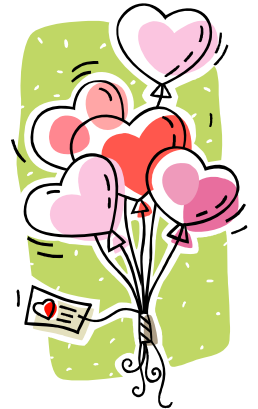
Baltimore City Child Care  
Resource Center  
9:30 am to 12:30 pm  
Fee \$20  
410-685-5150

### **DCR 339 - Creating a Positive Child Care Work Environment**

Glen Burnie Town Center  
2/16 6:30 pm to 8:30 pm  
2/18 6:30 pm to 8:30 pm  
Fee \$33 (both sessions)  
Anne Arundel  
Community College  
410-777-2915

### **2/27 9 Hour Communicate as A Professional Early Educator**

Child Care Links Suite 129  
9:00 am to 6:00 pm  
Fee \$50  
Child Care Links  
410-288-5942



## Training Locations

Baltimore City Child  
Care Resource Center  
1645 Ridgley St.  
410-685-5150

1st Step  
8974 Whitetail Ct.  
Perry Hall/White Marsh  
410-931-2252

Child Care Links  
1101 North Point Blvd.  
Baltimore  
410-288-5452

Anne Arundel Comm. College  
101 College Parkway  
Arnold  
410-777-2915

Lasting Impressions  
412 Fairmount Ave.  
Towson  
410-494-0994

Abilities Network  
8503 LaSalle Road  
Towson  
410-828-7700